



unitedstreaming in Action: Google Earth



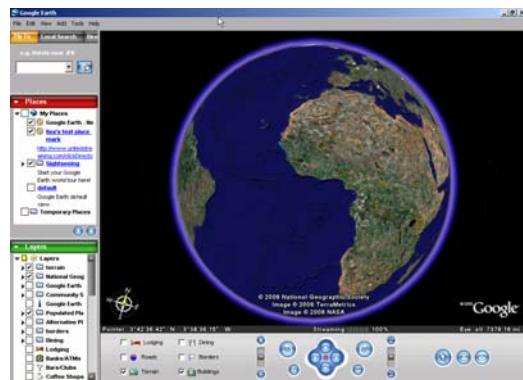
Google Earth is a free application that combines maps, satellite imagery, Google's search capabilities, and now *unitedstreaming* video. It allows you to navigate and plot, or "geocode," points around the world. Explore historical points of interest, or your hometown, and link to digital video segments to expand your knowledge and deepen your understanding.

In the Classroom

Students use Google Earth to create virtual tours, travel guides, brochures, and even digital stories. Find locations around the world, then link to a *unitedstreaming* video segment that corresponds to that location. Completed projects can be shared via email with classrooms who have the free Google Earth program.

Add a *unitedstreaming* video link to a Google Earth map

- Step 1 Brainstorm and storyboard with students the content and geographic locations on which the project will focus.
- Step 2 Familiarize yourself with **Google Earth** by taking the online tutorial: <http://earth.google.com/tour/>
- Step 3 Login in to www.unitedstreaming.com. Search for at least two video segments that are relevant to your topic and Google Earth map.



SEARCH

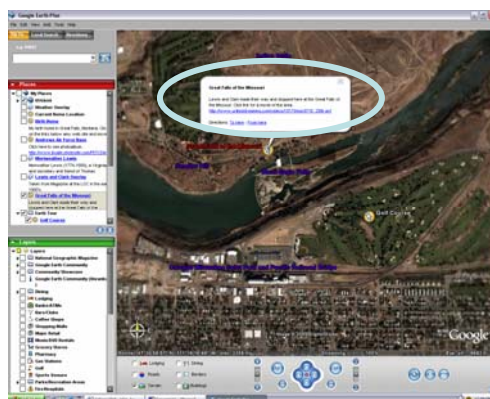
WITHIN

All Content



Advanced Search

- Step 4 Right-click on the **Play** button next to the segment you wish to link to. Select "**Copy Shortcut.**"
- Step 5 Navigate in Google Earth to your first location. Click on **Add > Placemark**. Name your Placemark and paste the URL location in the "Description" box. Click "OK" and position the Placemark on the map.
- Step 6 When you click on a Placemark the video link will appear. Click on the link and *unitedstreaming* will open in a new browser window. Log in to *unitedstreaming* and the video segment page will appear.



For additional integration ideas, go to the
Professional Development section of www.unitedstreaming.com